



supply chain planning solutions

for the process industry

The process industry has been undergoing dramatic changes over the past two decades due to globalization, industry consolidation, intensifying competition, and deteriorating margins. Companies in the process industry need supply chain systems that can deliver a competitive advantage through improved profitability, market share, and customer responsiveness.

WAM Systems is a highly-focused company dedicated to delivering advanced planning tools designed to help process manufacturing companies overcome these challenges. WAM is revolutionizing how such firms plan and manage their supply chains in today's increasingly complex and competitive world.

Founded in 1987, WAM Systems has a long history of providing supply chain solutions to many of the world's largest process firms. Our WAM Supply Chain Planning Solution is proven to improve profitability, competitiveness, and customer relations.

The WAM Supply Chain Planning Solution was designed from the ground up to meet the specific requirements of process manufacturing companies. The solution is a comprehensive suite of decision support and optimization applications that supports a broad set of supply chain business goals that help companies:

- Gain global supply chain visibility
- Improve forecast accuracy
- Reduce inventory levels
- Raise customer service levels
- Optimize production scheduling
- Facilitate collaborative S&OP
- Support financial planning
- Provide executive KPI analysis





“The powerful combination of the WAM Solution integrated with our SAP ERP system provides a solution not available in any single tool.”

“WAM’s consultants all are ex-SCM users and experts. They know the tools and the business. This was a differentiating factor.”

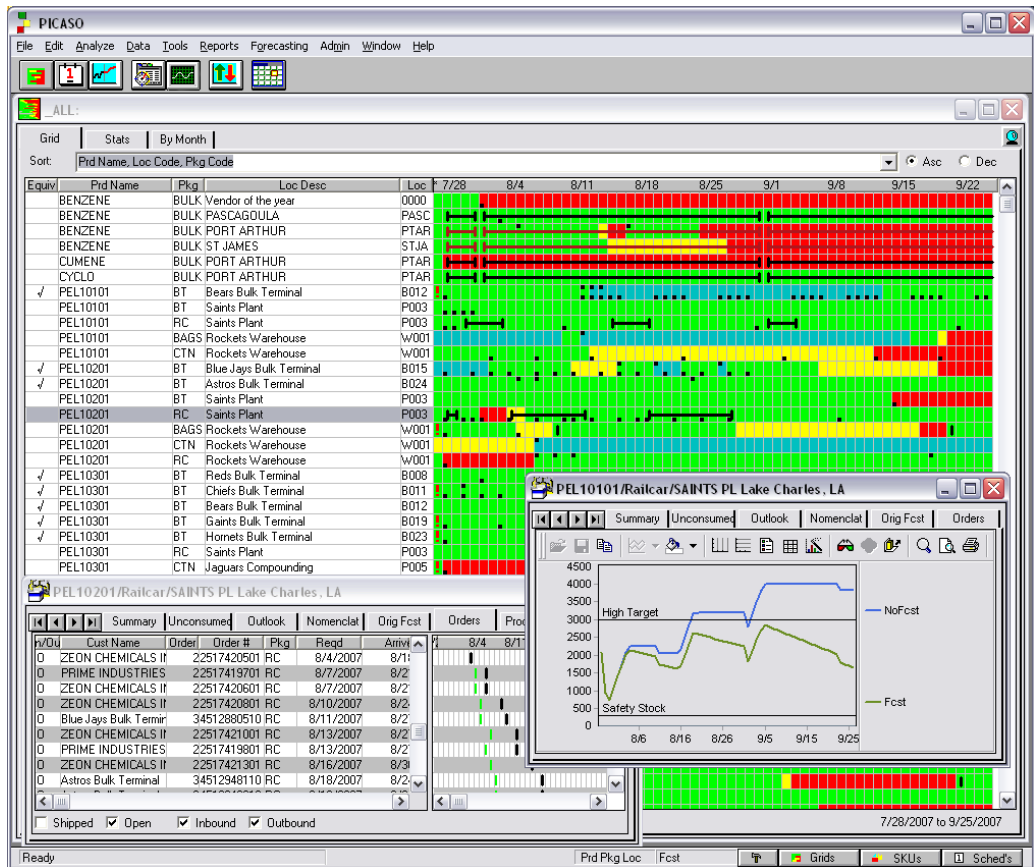
“We selected WAM to provide our supply chain solution based on their process industry track record. They offer a targeted solution that mirrors our planning needs, and they bring a knowledge of industry best practices that we consider every bit as important as their software offering.”

“Our selection of the WAM Solution was greatly influenced by its ability to quickly and easily model the complexities of process supply chains, providing visual displays and powerful optimization capabilities.”

“In choosing a partner for our supply chain initiative, we spoke with industry analysts and evaluated dozens of vendors. WAM provided the winning combination of process industry expertise and high value solutions built specifically for our needs.”

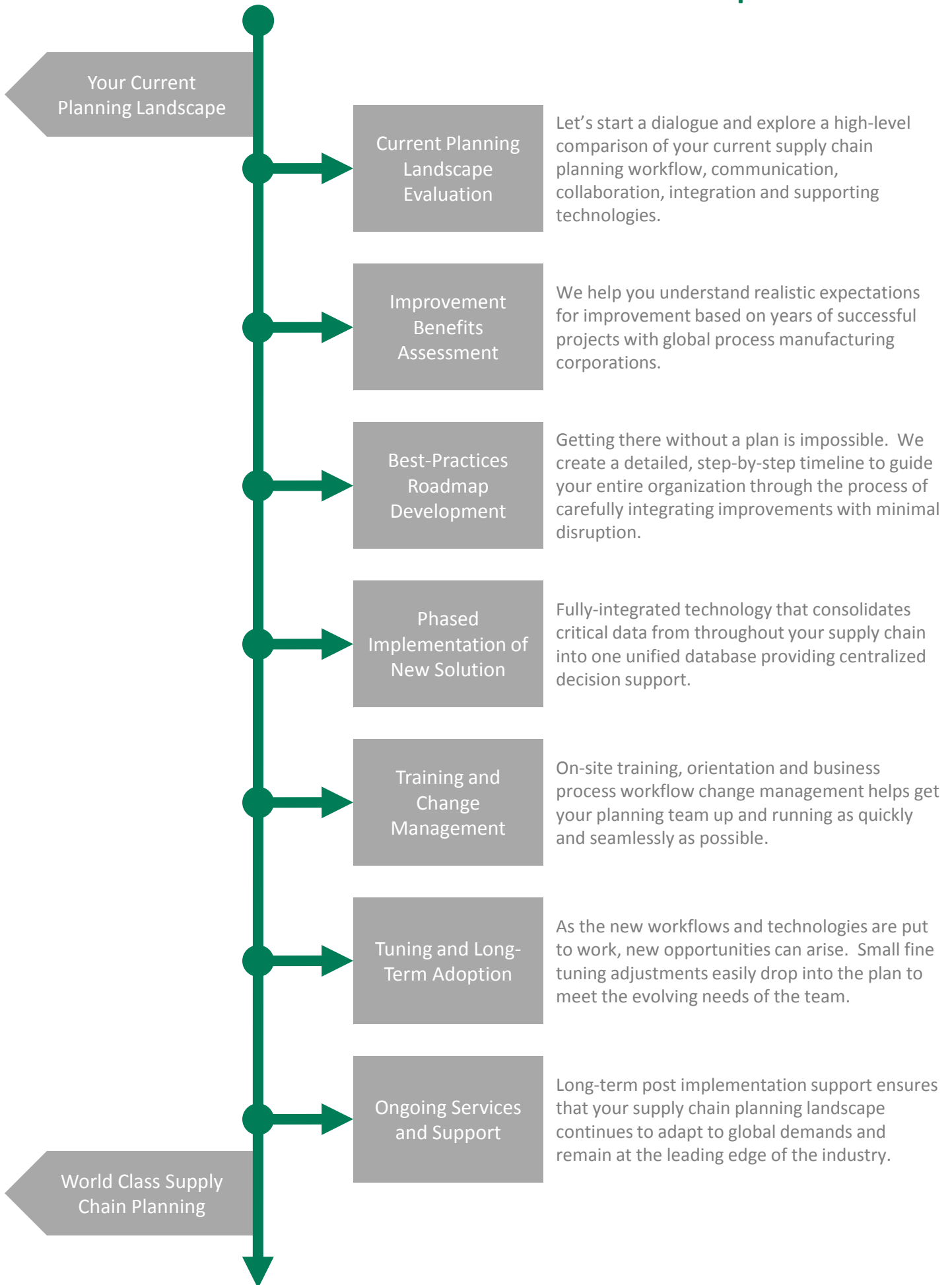
advanced supply chain planning solution

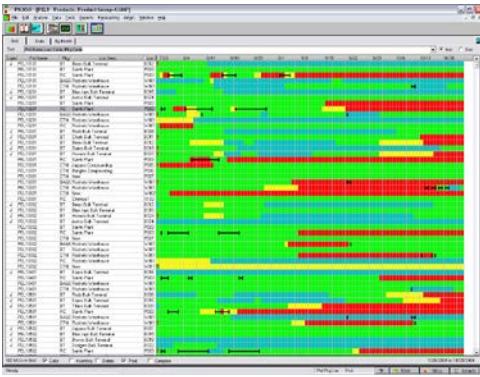
WAM delivers a comprehensive solution to help you optimize every aspect of your process supply chain--from demand management and distribution planning through production scheduling and sourcing. WAM's fully-integrated suite of planning and optimization modules gives you all the tools you need to develop fast and accurate plans that help you maximize profitability and productivity.



The WAM Solution's suite of modules allows for seamless connectivity to your ERP system, connecting with SAP® using technology with SAP Certified Integration.

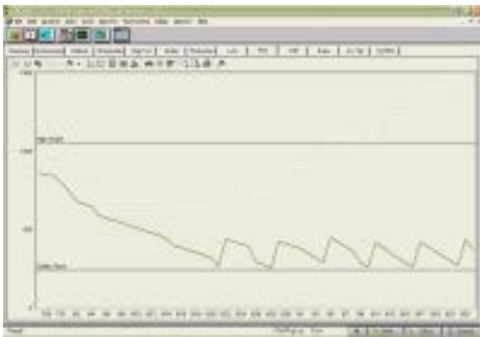
the path to world class





grid supply chain monitor

The WAM Grid Supply Chain Monitor serves as the core of the planning system. The Grid's highly graphical interface provides an all-in-one look at inventory projections, order status, planned production and material movements across all of the products in a business.



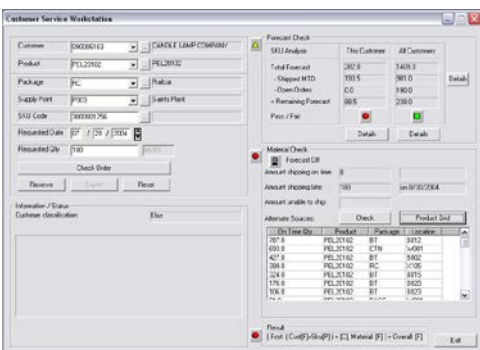
distribution replenishment planning

Integrated with the Grid Supply Chain Monitor, WAM's DRP module uses product formulations and replenishment algorithms to compute and recommend just-in-time replenishment orders for raw materials. These replenishments consider the lead-time and typical lot size from each supplier. Raw material inventories and replenishment orders are automatically linked to the supply chain simulator such that a change in a production schedule that turns raw material plans infeasible will trigger algorithms to re-plan optimal replenishment.



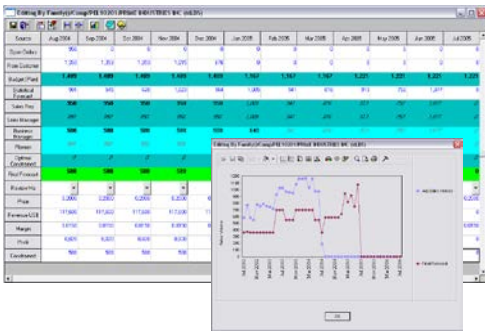
production schedule optimization

The WAM Dynamic Scheduler is used in cycle-based production environments to determine optimal production plans. The Dynamic Scheduler determines optimal cycle characteristics such as cycle length, product sequence, and frequency and considers variable production costs such as product-to-product transitions and off-grade production. It also considers customer service impacts to maintain customer service levels. The end result is a production schedule—created and/or updated in a matter of seconds—that provides the best balance between transition costs, inventory holdings, and customer service.



order promising

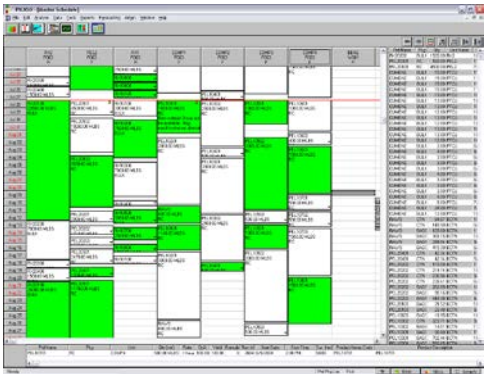
WAM Order Promising provides available-to-promise (ATP) functionality and order status updates to support day-to-day activities of the customer service personnel. The ATP analysis synthesizes inventory, production schedules, orders and forecasts to compute availability for any moment in the future, and also recommends alternate sourcing options if preferred sources are at capacity.



collaborative demand planning

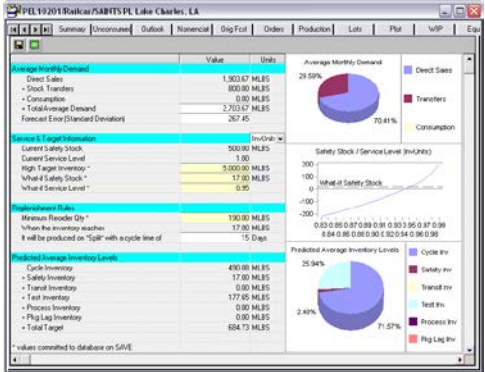
The WAM Demand Planning / Forecasting module creates statistical forecasts and supports the collaborative forecasting process.

- Generate statistical forecasts using a flexible, multi-tier tournament of statistical forecasting models
- Collect sales forecasts from field sales personnel
- Allow sales and customer service representatives, marketing planners and business managers to view, analyze, and override statistical forecasts based on marketing intelligence and unique knowledge of customer requirements
- Create personalized analytics to evaluate forecasting effectiveness



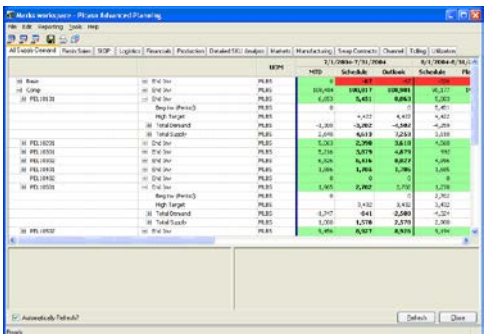
production scheduling

WAM's Production Scheduling module provides users with powerful simulation capability, wherein key operating parameters such as product transitions, equipment rates, and yield values can be modified to help create the best candidate schedule. In addition, changes made to the schedule are automatically incorporated into the Grid Supply Chain Monitor, allowing schedulers to immediately determine the feasibility and effectiveness of their changes.



inventory targeting

WAM Inventory Targeting provides a means for calculating safety stock recommendations based on targeted customer service levels. It also compares optimum inventory levels to anticipated inventory levels based on current supply chain management policies.



S&OP and IBP

The WAM Enterprise Planning platform provides the capability to support both Sales and Operations Planning (S&OP) and Integrated Business Planning (IBP) activities and analyses. The tool can be used to determine optimal production and sourcing policies that reduce costs and maximize profitability. In addition, it provides a means of rapidly determining not only what portion of the forecast is feasible to produce, but what product mix is most profitable to produce. In situations where capacity exceeds demand, the tool identifies opportunities to increase profits by recommending expanded production and sales of key products.



benchmarking surveys

WAM is conducting a series of benchmarking surveys with process companies throughout the world in an effort to assess the overall maturity of industry supply chain practices. The purpose of these surveys is to help you compare your company's supply chain process maturity with that of your industry peers. Each survey is composed of a telephone interview and final report. Sign-up now to participate and receive your personalized company report.

partner program

At WAM, we continually reinforce our commitment to create competitive advantages for our customers by teaming up with key business partners. We have developed strategic alliances with leading technology companies to deliver supply chain planning solutions to substantially improve profitability through measurable cost reductions and optimization of operations. WAM Systems is always looking for top-notch partners. If you are interested in establishing a mutually beneficial alliance with WAM Systems, please contact us at our corporate headquarters.

WAM Systems – North America

Corporate Headquarters

600 West Germantown Pike

Suite 230

Plymouth Meeting, PA 19462

Phone +1.800.358.8305

Email info@wamsystems.com

Web www.wamsystems.com

WAM Systems – South America

Av Nações Unidas, 12551

9th and 17th floors

CEP 04578-903 - São Paulo

SP - Brazil

Phone +55.11.3443.7732

WAM Systems - Asia

80 Raffles Place

Level 35 UOB Plaza 1

Singapore 048624

Phone +65.6248.4772

WAM Systems – Europe

Gustav-Stresemann-Ring 1

65189 Wiesbaden

Germany

Phone +49 (0)611.97774.410

Email eu@wamsystems.com